

# **TIBCO Business Studio™ - Community Edition**

## **Release Notes**

*Software Release 3.4.1  
June 2010*

## Important Information

SOME TIBCO SOFTWARE EMBEDS OR BUNDLES OTHER TIBCO SOFTWARE. USE OF SUCH EMBEDDED OR BUNDLED TIBCO SOFTWARE IS SOLELY TO ENABLE THE FUNCTIONALITY (OR PROVIDE LIMITED ADD-ON FUNCTIONALITY) OF THE LICENSED TIBCO SOFTWARE. THE EMBEDDED OR BUNDLED SOFTWARE IS NOT LICENSED TO BE USED OR ACCESSED BY ANY OTHER TIBCO SOFTWARE OR FOR ANY OTHER PURPOSE.

USE OF TIBCO SOFTWARE AND THIS DOCUMENT IS SUBJECT TO THE TERMS AND CONDITIONS OF A LICENSE AGREEMENT FOUND IN EITHER A SEPARATELY EXECUTED SOFTWARE LICENSE AGREEMENT, OR, IF THERE IS NO SUCH SEPARATE AGREEMENT, THE CLICKWRAP END USER LICENSE AGREEMENT WHICH IS DISPLAYED DURING DOWNLOAD OR INSTALLATION OF THE SOFTWARE (AND WHICH IS DUPLICATED IN LICENSE.PDF) OR IF THERE IS NO SUCH SOFTWARE LICENSE AGREEMENT OR CLICKWRAP END USER LICENSE AGREEMENT, THE LICENSE(S) LOCATED IN THE "LICENSE" FILE(S) OF THE SOFTWARE. USE OF THIS DOCUMENT IS SUBJECT TO THOSE TERMS AND CONDITIONS, AND YOUR USE HEREOF SHALL CONSTITUTE ACCEPTANCE OF AND AN AGREEMENT TO BE BOUND BY THE SAME.

This document contains confidential information that is subject to U.S. and international copyright laws and treaties. No part of this document may be reproduced in any form without the written authorization of TIBCO Software Inc.

TIB, TIBCO, TIBCO Software, TIBCO Adapter, Predictive Business, Information Bus, The Power of Now and TIBCO Business Studio, and TIBCO iProcess are either registered trademarks or trademarks of TIBCO Software Inc. in the United States and/or other countries.

EJB, Java EE, J2EE, JMS and all Java-based trademarks and logos are trademarks or registered trademarks of Sun Microsystems, Inc. in the U.S. and other countries.

All other product and company names and marks mentioned in this document are the property of their respective owners and are mentioned for identification purposes only.

THIS SOFTWARE MAY BE AVAILABLE ON MULTIPLE OPERATING SYSTEMS. HOWEVER, NOT ALL OPERATING SYSTEM PLATFORMS FOR A SPECIFIC SOFTWARE VERSION ARE RELEASED AT THE SAME TIME. PLEASE SEE THE README.TXT FILE FOR THE AVAILABILITY OF THIS SOFTWARE VERSION ON A SPECIFIC OPERATING SYSTEM PLATFORM.

THIS DOCUMENT IS PROVIDED "AS IS" WITHOUT WARRANTY OF ANY KIND, EITHER EXPRESS OR IMPLIED, INCLUDING, BUT NOT LIMITED TO, THE IMPLIED WARRANTIES OF MERCHANTABILITY, FITNESS FOR A PARTICULAR PURPOSE, OR NON-INFRINGEMENT.

THIS DOCUMENT COULD INCLUDE TECHNICAL INACCURACIES OR TYPOGRAPHICAL ERRORS. CHANGES ARE PERIODICALLY ADDED TO THE INFORMATION HEREIN; THESE CHANGES WILL BE INCORPORATED IN NEW EDITIONS OF THIS DOCUMENT. TIBCO SOFTWARE INC. MAY MAKE IMPROVEMENTS AND/OR CHANGES IN THE PRODUCT(S) AND/OR THE PROGRAM(S) DESCRIBED IN THIS DOCUMENT AT ANY TIME.

THE CONTENTS OF THIS DOCUMENT MAY BE MODIFIED AND/OR QUALIFIED, DIRECTLY OR INDIRECTLY, BY OTHER DOCUMENTATION WHICH ACCOMPANIES THIS SOFTWARE, INCLUDING BUT NOT LIMITED TO ANY RELEASE NOTES AND "READ ME" FILES.

Copyright © 2004-2010 TIBCO Software Inc. ALL RIGHTS RESERVED.

TIBCO Software Inc. Confidential Information

# Contents

<b>Release Notes</b> .....	<b>1</b>
Restrictions .....	1
New Features .....	2
TIBCO Business Studio .....	2
Migration and Compatibility .....	9
Migrating from Version 3.x .....	9
Migrating from Version 2.x .....	9
Migrating from Version 1.1 .....	9
Closed Issues .....	11
TIBCO Business Studio .....	11
Known Issues .....	22
TIBCO Business Studio .....	22



# Release Notes

The Community Edition of TIBCO Business Studio is unsupported. For self-service support, education, and access to the TIBCO Developer Network, visit <http://www.tibco.com/devnet/index.html>.

## Restrictions

The Community Edition of TIBCO Business Studio does not offer/support various things offered by other editions, including the following:

- Import of a WSDL from a TIBCO BusinessWorks live link.
- TIBCO Business Studio Forms, with which you can design, view, and test the forms you need to collect user input in a business process from within TIBCO Business Studio.
- TIBCO Business Studio Asset Central, which allows you to create a Subversion server for source control.
- Deployment to either TIBCO iProcess™ Engine or TIBCO ActiveMatrix® BPM.

Contact TIBCO on <http://www.tibco.com/company/contactus.jsp> for information on deployment licensing.

These features are documented in the online help and user guides, but are only available with the commercial editions of TIBCO Business Studio.

## Topics

---

- [New Features, page 2](#)
- [Migration and Compatibility, page 9](#)
- [Closed Issues, page 11](#)
- [Known Issues, page 22](#)

## New Features

---

This section lists features added since the last major release of this product.

### TIBCO Business Studio

This section lists new features in TIBCO Business Studio.

#### Release 3.4

- The Graphical Organization Modeler was enhanced to allow you to create typed organization entities directly within the graphical modeler. You are provided with a Public Company type, but you can also create your own organization entity types to reflect your own organization.
- Ability to create additional diagrams within a single Business Object Model. This allows a user to describe subsets of the model to better explain its use.
- Samples are linked from the [TIBCOcommunity](#) site to allow them to be updated more frequently.
- Email service tasks now offer better platform independent modeling. Associating a system participant allows the user to name the mail server that will be used and therefore model if more than one is to be used by the process. You will receive an error message if you try to enter an email task without a system participant. Server configuration and error handling are now moved to the Advanced tab which is consistent with other destination-platform specific model (PSM) properties.

#### Release 3.2

The following are new features in this release:

- **TIBCO Business Object Modeler Import and Export Enhancements** These facilities have been significantly enhanced:
  - It is now possible to create a business object model by importing tables from a database. Each table is automatically mapped to a Class in a business object model.
  - It is possible to create a business object model by importing XML Schema Definition (XSD) files or WSDL files and automatically converting them to a business object model.
  - It is possible to export business object models from Business Object Modeler as XSD files and as WSDL files.
  - It is also possible to export XSD and WSDL for one or more classes, rather than a complete business model.
- **Additional Resource Pattern Support** New resource patterns such as chained execution, piling, and retain familiar can now be modeled.
- **Process Modeler User Interface Enhancements** Several user interface enhancements have been added:
  - **Gadgets** A gadget is a user interface aid that allows you to easily create sequence flows or other links between objects.
  - **Palette favorites** A new drawer called **Favorites** has been added to the palette in the Process Editor, containing commonly used process objects. You can then customize the drawer contents according to your needs.
  - **Process Editor Quick Fixes** Quick fixes that were previously only available in the Problems view are now shown on the Process Editor tooltips.
- **Correlation Data** Correlation data is a new feature that is used to identify process instances when working with messages.
- **Embedded Sub-Process Local Data** Embedded sub-processes now support data fields that are local to the sub-process only (the data fields are not available to the containing process).

## Release 3.1

The following are new features in this release:

### Business Process Modeler

- **Ganymede Support** TIBCO Business Studio uses the Ganymede (3.4) release of Eclipse.
- **XPDL 2.1** TIBCO Business Studio stores process packages in XPDL 2.1 format.

- **BPMN 1.2** Major features of BPMN 1.2 are supported such as signal events and other notational changes.
- **Labels and Names** Process objects such as data fields, tasks, and so on, now have both a label and a name. Using the Business Analysis capability, only the label is visible. Using the Solution Design capability, both the label and the name are visible. The name is used to reference process data in scripts and sub-processes. When migrating from an earlier version, the migration XSLT creates labels from the existing names.
- **Greater Control of Destination Environments** Destination environments have been enhanced to include *destination components* (for example, there are iProcess destination components such as **Engine, Modeler, Technology Plug-ins, and Web Services**). For each component, you can select the version that you want processes to be validated against (for example, Engine, version 11.0.1). You can create your own destination environments that are comprised of several destination components for which you can also specify versions. The default destination environments, and any destinations you create are available on the **Destinations** tab. Your process is validated against your selection on the **Destinations** tab (and the implicit destination components).
- **Importing Custom Fragments** Process Fragments can be imported so that different users can share custom process fragments.
- **Easier Deployment** There is a new Deployment view, into which you can drag an XPDL file for deployment. If any logical names require mapping, the appropriate dialogs are presented.
- **Improved Performance** Several aspects of TIBCO Business Studio have been tuned to be faster, especially with large models. Areas of improvement include validation of models, creation of process documentation, and transformation to Platform Specific Models (PSM)
- **Showing/Hiding Implementation Details** Property pages now have hyperlinks that show or hide the right side of the view that contains the implementation details for the selected object (for example, the web service details for a service task). Clicking one of these links also changes between the Business Analysis and Solution Design capabilities as appropriate.

## Release 3.0

The following are new features in this release:

### Business Process Modeler

- **Process Interfaces** TIBCO Business Studio supports Process Interfaces, which equate to iProcess I/O Parameter Templates. These are used to create dynamic sub-procedures and graft steps.

- **Service Tasks Support XML/JMS Transport** In addition to SOAP/HTTP service calls, TIBCO Business Studio now supports XML/JMS service calls.
- **Service Tasks Support URL Aliases, Security Profile Aliases, BusinessWorks Endpoint Aliases** In TIBCO Business Studio, you can specify a logical name (defined as a System Participant) to use at design time rather than specifying a specific URL, Security Profile, or BusinessWorks endpoint name. This is equivalent to the TIBCO Web Services Plug-in feature of URL and Security Profile aliases. At deployment the logical names are mapped to the specific information (retrieved using a JMX server).
- **Public and Private Activities** TIBCO Business Studio now supports the iProcess concepts of Public and Private Activities, and allows you to associate Process data with those Activities.
- **Enhanced Mapper** The mapper used for parameter mapping (for example, on a Service Task) has been enhanced for better usability. It now also supports both XPath and XSLT scripts.
- **Auditing Script Support** You can now add audit initiated and audit completed scripts for Service Tasks and Script Tasks.
- **New Inline Sub-Process** You can now create an inline Sub-Process from an Independent Sub-Process to optimize the Process. At runtime, the objects such as Activities and Events contained in the Independent Sub-Process are brought into the top-level Process and executed there.
- **Service Tasks Enhancements** You can now drag WSDL operations onto Service Tasks. You can also import a WSDL directly from the Properties View of the Service Task.
- **Enhanced Looping Support** Standard and Multi-Instance Loops have been enhanced to support certain workflow patterns, loop expressions, and scripts.
- **Structured Discriminator Pattern Support** This pattern means that you can specify how many incoming Sequence Flows to a Complex Gateway are received before flow continues.
- **Workflow Resource Pattern Support** The following workflow patterns are now supported.



For more information about the Workflow Patterns initiative, see:

<http://www.workflowpatterns.com/index.php>

- Pattern 5: Separation of Duties
- Pattern 14: Distribution by Allocation - Single Resource
- Pattern 15: Random Allocation
- Pattern 16: Round Robin Allocation
- Pattern 22: Resource-Initiated Execution - Allocated Work Item
- Pattern 39: Chained Execution[# 10641]
- **Project References** Projects can refer to other projects. This allows you to do the following:
  - Invoke a Sub-Process from another Project
  - Use a Process Interface from another Project
  - Create a Data Field or Formal Parameter of the type External Reference
  - Select a WSDL from a different Project

## General

- **Business Object Modeler** In the previous version of TIBCO Business Studio, the Business Object Model Editor was called the Concept Model Editor. This version of TIBCO Business Studio enables you to create Business Object Models, as well as Concept Models. Business Object Models are more generic than Concept Models. Concept Models are specialized using a UML Profile that extends the meta-data to provide additional functionality over core UML. Using the Business Object Modeler, you can now add Primitive Types and Operations and apply UML Profiles and Stereotypes to your Business Object Models.
- **Support for Windows Vista** Windows Vista is now a supported platform for TIBCO Business Studio.

## Release 2.1

The following are new features in this release.

For the Business Analyst:

- **Enhanced Process Package Documentation** Everything in the model is now included in the Process Package Documentation, images are hyperlinked (clicking an Activity takes you to Activity detail), and transitions are explained. Process Package Documentation can also be generated from the command line.
- **Welcome Page Improvements** The Samples workspace has been replaced by ability to install samples into a workspace from the Welcome Page Samples

area. The TIBCO Business Studio Community site forum is viewable from Welcome page.

- **Performance Enhancements** The Performance issue with Problem markers resolved.
- **User-Configurable Problem Thresholds** Users can now configure the severity of reported Problems.

For the Process Developer:

- **Open, Close, and Submit Scripts** - Scripts can be specified on a User Task that when exported or deployed to iProcess Engine become Initial, Keep and Release scripts.
- **Improved Usability** Both the Mapper and the Service Explorer have been enhanced.
- **Support for EAI POJO** Users can now specify Java code that is executed at runtime in a new EAI POJO step in iProcess Engine.
- **Linux support** Red Hat and SUSE (see *TIBCO Business Studio Installation Guide* for details).

General:

- Installer does not require JRE to be pre-installed.

## Release 2.0

The following are new features in this release.

- **BPMN Complete Set** TIBCO Business Studio now supports the complete set of Business Process Modeling Notation (BPMN). For more information, see <http://www.bpmn.org>.
- **Improved Process Editing** The Process Editor has been improved with a revised Palette and new features such as Diagram Fragments and Sub-Process refactoring.
- **Enhanced Service Tasks** You can now configure Service Tasks to call web services (including TIBCO BusinessWorks live link), call Java code, send an e-mail or run a stored procedure on a database.
- **Direct Deployment to destination environments** For example, if you have iProcess components, you can now deploy a process from TIBCO Business Studio directly to the TIBCO iProcess Engine Version 10.6. Users of iProcess Engine version 10.3.5 and later may also deploy complete procedures using the Procedure Management features of TIBCO iProcess Modeler.
- **Enhanced User Tasks** You can add Data Fields and Parameters to Users Tasks and as input and output Parameters.

- **Concept Modeler** This new editor allows you to define a vocabulary of core business objects for analysis and documentation purposes.
- **Aris Import** You can now import information from Functional Allocation Diagrams (FADs) as well as Extended Process Chain (EPC) diagrams. EPC import now additionally caters for intermediate events.
- **Asset Central** - This new utility provides source control using a bundled product, Subversion (see <http://subclipse.tigris.org/>).

# Migration and Compatibility

---

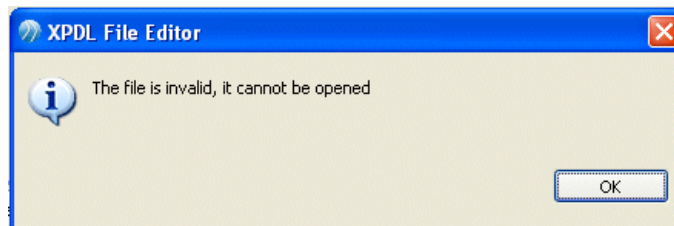
This section explains how to migrate from a previous release to this release.

## Migrating from Version 3.x


Some files require migration to new formats. These will be highlighted by entries in the Problems view. Right-click and select **Quick Fix**. When you have resolved the problems, you can open the process in the appropriate editor.

## Migrating from Version 2.x

1. Copy the package containing the process into a packages special folder.
2. Either start TIBCO Business Studio, or if it is already open, refresh the Project Explorer.
3. Note that the package cannot be expanded and clicking on it displays the following error:



4. In the Problems view for the package, the following error message is displayed:

 Problems while loading the file. Possible version problem.

Right-click and select **Quick Fix**. When you have resolved the problems, you can open the process in the Process Editor.

## Migrating from Version 1.1


To migrate from Version 1.1, do the following:

1. Depending on whether you are migrating a workspace or a Package, do the following:
  - To migrate a workspace, select **File > Switch Workspace**, browse for the location of the Version 1.1 workspace, and when prompted, restart TIBCO Business Studio.
  - If you want to migrate only one Package, and not an entire workspace, either copy the Package into the Project Explorer or select **File > Import**, expand **General**, select **Existing Projects into the Workspace**, and follow the instructions in the wizard to import the Project.



Whilst the Project folders are present, the Project Explorer displays the contained XPD files only, without the standard TIBCO Business Studio Project Explorer branches such as Process Packages Folders, Data Fields, and so on.

2. Right-click a Project you want to migrate and select **Migrate Project to Current Version**. The icon on the Project in the Project Explorer changes and the Project Explorer folder is added.
3. In the Problems view for each Package that you migrated, the following error message is displayed:

 Problems while loading the file. Possible version problem.

Right-click and select **Quick Fix**. When you have resolved the problems, you can open the Process in the Process Editor.



You can correct several migration problems at once from the **Quick Fix** dialog by clicking **Find Similar Problems**, selecting them, and clicking **OK** to apply the fix. The number of similar problems found depends on the filtering that you have set up in the Problems view.

## Closed Issues

---

The section lists issues that were closed in the named releases.

- [TIBCO Business Studio](#)

### TIBCO Business Studio

This section lists issues that were closed for TIBCO Business Studio in the named releases.

#### Version 3.4.1

None.

#### Version 3.4.0

None.

#### Version 3.3.0

Change Request ID	Summary
XPD-211	Export did not generate the right export file for an Order step of type "This Procedure".
XPD-213	Email service task: The %% escape sequence resulted in a validation error.
XPD-219	Simulation: validation error for non-support of performer participant could be more descriptive.
XPD-220	Mapping from user scripts to xsd types in a webservice or BusinessWorks service task now validates the data types are compatible.
XPD-242	Extended description behavior on export from TIBCO Business Studio has been corrected.
XPD-633	Using TIBCO Business Studio on LINUX, you can now connect to a TIBCO Administrator Server from with TIBCO Business Studio.
XPD-708	For a Process as a Service with an optional parameter, the generated WSDL has the parameter required.

**Version 3.2.0**

Change Request ID	Summary
1-9DCCYY	<p>Firefox version 3.0 was not supported for embedded HTML rendering within Eclipse, although Eclipse did support Firefox 3.0 browser windows within the Eclipse workbench.</p> <p>No problem has been experienced using Firefox 3.0.11 with TIBCO Business Studio version 3.2.</p>
1-9DABKX	<p>Unable to launch TIBCO Business Studio in a workspace built for an earlier version.</p>
1-8ZHBVY	<p>If you renamed a file in the Project Explorer but before saving your changes you switched to another application, when you went back to the Project Explorer, the file had disappeared.</p>
1-8ZHBCS	<p>If TIBCO Business Studio reported validation problems in the Problems View for a Process Interface or Process and you deleted the Process Interface or Process, the validation problems were still displayed in the Problems View.</p>
1-8ZHB4Z	<p>If you renamed a Process Interface event, you did not see the change in the Process Editor.</p>

**Version 3.1.0**

Change Request ID	Summary
1-9HN5KJ	TIBCO Business Studio sometimes runs out of memory when copying process objects that contain large (bigger than 16 MB) images. This has been corrected; large images are automatically scaled down to avoid this problem.
1-8ZHB20	Sometimes when you click an element in the Project Explorer, <b>Save</b> is not enabled, even if you have made a change to the Package.
1-8ZHB5E	If you are passing process data to a Java service and the POJO meta expects a parameter of type Primitive Char and at runtime, you pass an empty value to this parameter, then the case will fail.
1-8ZHB8E	When selecting TIBCO Business Studio help from the <b>Overview</b> on the <b>Welcome</b> page, the Table of Contents links are incorrect for the Help topics. For example, the topic displays one guide but the Table of Contents displays the Table of Contents for another guide.

## Version 3.0.1

Change Request ID	Summary
1-94ZVGV	Simulation fails if Formal Parameters used in generated scripts contain invalid JavaScript characters.
1-94ZVHL	With the Simulation destination environment set for a Process, if you create an XOR gateway and specify a Parameter on the Rule Parameter tab, you cannot add a Rule on the Rule tab of the outgoing conditional sequence flow.
1-94HUNZ	New Parameters are not being created in TIBCO Business Studio for TIBCO BusinessWorks WSDL Parameter mappings that have multiple sequences or groups.
1-94I5RX	The Business Object Modeler documentation export fails to create an image when a model element has a restriction applied.
1-94HUQG	Expressions used to define Prediction Duration are not correctly validated. This has been fixed; a Data Field can now be entered to define Prediction Duration.
1-94HUQT	The <b>Delete</b> option is disabled on the right-click menu for some Processes. These Processes can be inadvertently deleted by deleting other Processes.
1-94HURT	Exporting the Procedure Documentation for a Package can cause the system to run out of memory.
1-94HUS6	The post-install notes in the Installation guide refer to the menu item <b>Select Window &gt; Validate Business Studio Configuration</b> . This is incorrect, the top-level menu item is <b>Help</b> not <b>Windows</b> .
1-94HUST	Under rare circumstances a TIBCO Business Studio 2.1 Process cannot be migrated to version 3.0, and displays the error message 'Stored Procedure' is not legal.
1-94I5PF	Sub-Process Tasks that reference a Process Interface or Sub-Process that is contained in another Package generate a validation error. This validation error has been removed, however the Package that contains the referenced Interface or Process should be deployed <i>before</i> the Package that references them.
1-90DXZQ	In a Service Task, XPATH concatenation of String and Boolean field to a WSDL Int/Integer parameter deploys without errors, but fails at runtime.
1-90KFZC	Repeating elements in the middle of XPath expressions are not validated for multiplicity. This applies to both simple and user-defined mappings.



Change Request ID	Summary
1-8ZM1O1	<p>The <i>TIBCO Business Studio Installation</i> guide states that TIBCO do not recommend installing TIBCO Business Studio Version 3.0 in the same installation environment as either;</p> <ul style="list-style-type: none"> <li>• earlier versions of TIBCO Business Studio, or</li> <li>• other TIBCO products.</li> </ul> <p>However, you can do this by using a configuration file called <b>platform.xml</b>. The <b>platform.xml</b> file should specify:</p> <ul style="list-style-type: none"> <li>• that only those features installed by TIBCO Business Studio Version 3.0 are in the site located at <b>components\ eclipse</b>, and</li> <li>• that the policy for that site must be MANAGED-ONLY.</li> </ul> <p>Please refer to the Eclipse documentation for information on how to create the <b>platform.xml</b> file:</p> <p><a href="http://help.eclipse.org/help32/index.jsp?topic=/org.eclipse.platform.doc.isv/reference/misc/update_platform_xml.html">http://help.eclipse.org/help32/index.jsp?topic=/org.eclipse.platform.doc.isv/reference/misc/update_platform_xml.html</a></p>
1-8ZJM2H	<p>When writing an XPATH Expression in a user defined script, you must put the logical expression within brackets if you want it to be validated correctly. For example:</p> <pre>(\$field1 &gt; 1 or \$field2 &gt; 1)</pre>
1-8ZHW24	<p>If you create a new Process or Process Interface by selecting <b>File &gt; New &gt; Other</b>, the new Process or Process Interface is not created with a default name for example, <b>packagename-process</b> where <i>packagename</i> is the name of the package where you are creating the new Process or Process Interface.</p>
1-8ZHAW9	<p>TIBCO Business Studio only supports iso-8859-1, also known as Western European encodings.</p>
1-8ZHW0T	<p>TIBCO contributions to the <b>Introduction/Welcome</b> pages and the TIBCO samples are not localization-ready.</p>
1-94I5PS	<p><b>Ctrl + S</b> is not enabled to save a file in the Process Editor.</p>
1-8GL8VK	<p>After pasting an existing Package with a Service Task into a newly-created Project, and then associating the WSDL from the original Project with the new Project (either by importing the WSDL or pasting it into the Project, the existing web service mappings are recreated. However, neither the Use local WSDL nor the Use Remote WSDL options are selected.</p>

**Version 3.0**

Change Request ID	Summary
1-8ZHAX8	When you have a Service Task that makes an RPC based WSDL call, you cannot map a constant to a WSDL parameter by creating a Task script and then mapping the script to the WSDL parameter.
1-8ZJM57	In the Business Object Modeler, if you select an element that refers to an element from a referenced Project, the reference is displayed in the Business Object Editor. However, if you deselect the element, the reference is still displayed.
1-90A9ZF	Adding a new attribute to a WSDL file that is already used by a Service Task breaks the existing parameter mappings.
1-8GRC54	There is an incorrect validation error that prevents you from mapping a Decimal number to a Java.math.BigInteger.
1-8GL8S7	On Linux, while working with the Process Editor there is sometimes a delay when expanding Palette sections or selecting an element and placing it on the process diagram.
1-8GL8V3	<p>In areas of TIBCO Business Studio where you can use the mapper, the following restrictions existed:</p> <ul style="list-style-type: none"> <li data-bbox="305 913 1265 982">• You cannot drag mappings to the source tree (left side) if the target of any of the dragged mappings has multiple inputs.</li> <li data-bbox="305 992 1108 1027">• You cannot drag multiple mappings to the target tree (right side).</li> </ul> <p>Combining or separating two fields is now done in the Script Editor.</p>
1-8GL8YO	There are cosmetic display issues with the installer dialogs on Linux platforms.
1-8GL903	If you perform a Custom installation and installing both TIBCO Business Studio and Asset Central, and then cancel the installation, a Java exception is displayed because the installer is attempting to run the Asset Central Configuration Utility.
1-8GL90K	If you perform an uninstallation of all products from an installation environment, that environment should no longer be selectable in subsequent uninstallations. However, with multiple installation environments this is sometimes not the case.
1-8GL91Z	If a method used in a Java Service Task is deleted from the Java source, the method invocation is grayed out in the Service Task Properties view, however the mappings are not completely removed.

Change Request ID	Summary
1-8NK27B	Non-ASCII characters cannot be used in the <b>Name</b> and <b>Description</b> fields of a Process Package Header.
1-8FR0LF	ARIS models that include comments fail to import into TIBCO Business Studio.
1-8N1UQX	Non-ASCII characters cannot be used in the <b>Author</b> field of a Process Package Header.
1-86O7Q8	You cannot create Business Assets (for example, Prince2 Stage folders) from the <b>New &gt; Other &gt; Project Management</b> menu because you cannot select a Project.

## Version 2.1

Change Request ID	Summary
1-86O76P	Occasionally, deleting a Project using the Project Explorer fails. This can be caused by external programs maintaining references to TIBCO Business Studio files.
1-75NB0J	Migrating a Package to the current version sometimes fails because there are attributes in the package file which have namespaces.
1-75B2Y	When uninstalling TIBCO Business Studio, if you have modified any of the files in the installation directory (for example, the samples workspace), you are prompted as to whether you want to remove the files. Regardless of how you respond to this dialog, the files are not removed.
1-86RCSW	Copying an Independent Sub-Process Task into a Process in a different Package, or copying a Process that contains an Independent Sub-Process Task into a different Package, results in a mapping on the Mapping tab that is only partially complete and cannot be deleted.
1-86O7FO	<p>If an Event-based Gateway starts a Process, it cannot have outgoing Sequence Flow to a Timer Event, per the BPMN specification:</p>  <p>If this situation occurs, TIBCO Business Studio displays the following validation error in the Problems view:</p> <p>BPMN 1 : An Event-based gateway starting a process cannot have an outgoing transition to a Timer Event.</p> <p>Placing a Start event before the Gateway should eliminate the error because this is permitted in BPMN.</p>  <p>However, TIBCO Business Studio continues to display the error in the Problems view despite the Start Event making this a valid BPMN construct.</p>
1-86RAML	Mappings between array fields can generate errors in the Script editor that do not affect deployment or execution.

Change Request ID	Summary
1-86O7PR	The import of a WSDL using an invalid URL fails, however no error message is displayed.
1-86PV7H	Sub-procedure Parameter mapping does not validate that the lengths of source and destination data being mapped is the same. For example, currently for integer and decimal numbers, if the non-decimal portion of the number is smaller in the destination Field or Parameter, no value will be passed at runtime.
1-86PV88	When refactoring a User Task that has a Performer Data Field Participant that is shared with other User Tasks that are not being refactored, the User Task in the new Independent Sub-Process loses its Data Field Participant. However, in the new Independent Sub-Process, a Formal Parameter is created for the Performer Data Field. The Independent Sub-Process call task will map the original Performer Data Field to the newly-created Formal Parameter.
1-86RCRN	If a Web Service operation has a simple-type message part, the corresponding Parameter must be mapped even though there is no validation message informing you that this is required.
1-86PVAE	When creating a Web Services Service Task and selecting an operation that has inputs and outputs, the Mapping In and Mapping Out tabs are not immediately displayed.
1-86PVBC	When using the Concept Modeler, if on the Properties view for an Association, you change the <b>Navigability</b> from bi-directional to uni-directional, the <b>Source</b> and <b>Destination</b> values do not update accordingly.
1-86PVBT	Normally a missing WSDL generates a Problem in the Problems view when creating the Task. However if a Service Task that was valid now points to a WSDL that does not exist (for example, someone sent you only the XPDL file but not the WSDL), an exception is displayed in the error log.

## Version 2.0

Change Request ID	Summary
1-71ZF2B	It is not possible to delete the last Lane in a Process individually (it can be deleted by multiple selection).
1-720AUN	Uninstallation of TIBCO Business Studio could be simplified.
1-720AVC	It is not possible to switch workspaces from within TIBCO Business Studio.

Change Request ID	Summary
1-720AW2	You cannot double-click a Note in a Process to edit it.
1-720AWR	When resizing Activities it is possible to make them overlap with other Activities.
1-720AX6	When repositioning an Activity, the tooltip remains at the previous position until the Activity is reselected.
1-720AXV	When dragging a Sequence Flow, the animation lags behind the line movement.
1-720AYK	A new Process should be created when a new Package is created.
1-720AYZ	The shortcut key for the final dialog of the installer does not work.
1-720B0H	If a Data Field is used as an Actual Parameter to an Activity and then deleted, it is not removed from the XPDL file despite not being visible in TIBCO Business Studio.
1-720B2K	Build script needs to allow creation of an update site.
1-720B4D	In the Process Editor, a visual indication of the docking points of an object is needed.
1-720B5H	The complete set of BPMN features is not present.
1-720B5W	The state of the workspace (editors, Project Explorer, and so on) should be saved from one session to the next.
1-720B6B	Note Association could be improved.
1-720B6Q	For a Process with several Activities, if any Activity is on the edge of the uppermost lane, the whole Pool moves slightly from its default position and the simulation bar chart reading is displayed outside the boundary of the Lane.
1-720B8R	Using the shortcut keys in the installer does not work correctly.
1-721Q7X	The Custom Installation option refers to the wrong version of Eclipse.
1-721WMF	There are performance issues with a Package that contains a large number of Processes.
1-721Q9B	The extension point <code>com.tibco.xpd.xpdlr2.validator.xpdValidationProvider</code> should be renamed.
1-721QBU	There are formatting problems with multi-line notes and descriptions.

Change Request ID	Summary
1-721QC9	In the Problems view, the Location column should be set.
1-721QF3	Editors from Eclipse Web Standard Tools (WST) are not enabled.
1-721QHH	Multiple Participants are not supported.
1-721QHW	Improved icons needed for Data Fields and Participants.
1-721QKE	Working with Prince2 Assets in the Project Explorer generates an exception.
1-721QKT	Loops with Gateways cause infinite loops in Simulation.
1-721QM7	XPDL Join and Split transition restriction elements missing for XOR Gateways.
1-721QNR	Simulation Quick Fix does not take effect unless TIBCO Business Studio is restarted.
1-721QO6	In the sample workspace, the Project Explorer displays an empty branch in the treeview.
1-721QOV	Lane resizing not working in certain cases.
1-721QPP	Java Virtual Machine error on TIBCO Business Studio shutdown.
1-721QQ5	Exception generated when using endpoints on a Sequence Flow.
1-721QRE	Missing simulation validation message for a Process with parallel Gateway.
1-721QRT	Inappropriate validation message for Simulation displayed.
1-75NAZJ	Custom installation should not allow user to proceed when no options are selected.
1-75NAZV	The Project Explorer displays an empty branch in the treeview if you copy, paste, then expand a Package.
1-86O7OC	When using Asset Central to commit, the icons, revision numbers, and commit dates in the Project Explorer are not all refreshed. They must be selected individually and refreshed.
1-75NAXR	Links from the online documentation to the TIBCO Support site do not work under Windows 2000 and Windows 2003 Server.
1-75NB07	When changing a Gateway from XOR to AND, the Rule Parameter tab should not be displayed on the Properties view of the Gateway.

## Known Issues

---

The tables in this section lists known issues in this release.

- [TIBCO Business Studio](#)

### TIBCO Business Studio

The table in this section lists issues related to TIBCO Business Studio in this release.

Change Request ID	Summary/Workaround
XPB-799	<p><b>Summary:</b> Business Studio fails to launch correctly when installed on Windows 7 under the C:\Program Files (x86)\ directory.</p> <p><b>Workaround:</b> Avoid using the Program Files directory for your installation.</p>
XPB-734	<p><b>Summary:</b> When you generate a business service from a message start event it will create for you a system participant but this participant has no shared resource name on the Advanced tab which results in an error marker.</p> <p><b>Workaround:</b> Use the quick fix provided.</p>
XPB-707	<p><b>Summary:</b> Cannot import into Business Studio WSDLs with more than one binding per service.</p> <p><b>Workaround:</b> Avoid having more than one binding for any given published service.</p>
TAP-4386	<p><b>Summary:</b> Distributed Application Archive (DAA) files sometimes can have long internal paths which can lead to deployment failure.</p> <p><b>Workaround:</b> None.</p>
XPB-782	<p><b>Summary:</b> A system participant may only be reused for invoking the same port type (in the case of virtualized services) or port (concrete services). Also, a system participant may not be used to both expose a service and consume another (or even the same one).</p> <p><b>Workaround:</b> Be careful to plan how you use system participants.</p>

Change  
Request ID

## Summary/Workaround

XPD-726

**Summary:** The following complex type extends complex type construct in a WSDL schema is not supported:

```
<s:complexType name="A">
  <s:sequence>
    <s:element name="a" type="s:string"/>
  </s:sequence>
</s:complexType>
<s:complexType name="B">
  <s:complexContent mixed="false">
    <s:extension base="s0:A">
      <s:sequence>
        <s:element name="b" type="s:string"/>
      </s:sequence>
    </s:extension>
  </s:complexContent>
</s:complexType>
```

**Workaround:** Change the above construct to use the following type of construct instead:

```
<s:complexType name="A">
  <s:sequence>
    <s:element name="a" type="s:string"/>
  </s:sequence>
</s:complexType>
<s:complexType name="B">
  <s:sequence>
    <s:element name="a" type="s:string"/>
    <s:element name="b" type="s:string"/>
  </s:sequence>
</s:complexType>
```

XPD-766

**Summary:** For BOM to XSD conversion, complex type XSD elements or attributes with name="value", this setting does not persist correctly.

For example:

```
<xs:complexType name="complexType1">
  <xs:attribute name="Value" type="xs:string" use="required"/>
</xs:complexType>
```

will result in a BOM attribute with name equal to "value1". This incorrect value will be persisted in BOM to XSD export.

**Workaround:** Avoid setting XSD complex type attribute and element names to "value".

Change  
Request ID

## Summary/Workaround

XPD-749/

XPD-802

**Summary:** The following XSD constructs are not supported in XSD-BOM-XSD transformation and are highlighted via validation rules:

- 1) Attribute/Element name clash within same complex type
- 2) xsd:choice
- 3) xsd:abstract
- 4) xsd:mixed
- 5) XSD any/anySimpleType
- 6) AttributeGroup
- 7) SubstitutionGroup
- 8) Union
- 9) xsd:redefine
- 10) xsd:notation
- 11) xsd:list
- 12) xsd:anyAttribute (xsd:any is already excluded)
- 13) xsd:key
- 14) xsd:keyref
- 15) xsd:unique
- 16) xsd top-level elements
- 17) xsd:complexType as a restriction of another complexType
- 18) xsd:extension of a simple type
- 19) xsd:group
- 20) xsd:all
- 21) xsd:top-level attributes

These special situations are not validated and are documented as restrictions:

1. If an XML schema contains elements with the same name as a top level complex type also in the schema, then after import to a Business Object Model the attributes corresponding to these xsd elements will have incorrect cardinality. Multiplicity is set to 0..1 regardless of the cardinality setting in the original XML Schema. These incorrect cardinality values will be persisted in subsequent BOM to XSD exports.
2. If an imported XML schema contains a Simple Type of base xsd:positiveInteger, the equivalent construct in the XML schema generated in the BDS project is an xsd:Integer. However, this generated construct is missing the constraint "minInclusive=1".
3. If a class (ClassA) contains attributes and extends (generalizes) another separate class (ClassB), then during BOM to XSD transformation, the attributes are not persisted in the XML schema if ClassA also has a composition relationship to a separate class (ClassC).

**Workaround:** The workaround for situation 1 is to rename any elements that have the same name as a top level complex type prior to XSD-BOM import/transformation.

Workaround for situation 2: None.

Workaround for situation 3: On a user defined BOM, instead of using a composition relationship to ClassB, ClassA could contain an attribute of TypeB.

Change Request ID	Summary/Workaround
XPD-316	<p><b>Summary:</b> When we rename a Business Object Modeler class and also a Business Object Modeler package, this should be reflected in the scripts in the way that renaming a Business Object Modeler package should rename a factory name and renaming a class should rename the factory "create" method for that class.</p> <p><b>Workaround:</b> Rename the factory and the class by hand. Content assist should help as it will contain the updated value.</p>
XPD-729	<p><b>Summary:</b> The following words are not allowed in the Business Object Modeler package name: function, export, import, if, else, switch, case, default, while, do, for, break, continue, var, with, catch, finally, void, reserved</p> <p><b>Workaround:</b> Rename the Business Object Modeler package to avoid these keywords.</p>
XPD-621	<p><b>Summary:</b> Reference tasks are not supported.</p> <p><b>Workaround:</b> Use copy and paste to copy an existing task. Keep the task you want to reference in an xpd file that will not be deployed, and treat that as the master and always copy from there.</p>
XPD-589	<p><b>Summary:</b> Eclipse 3.4.2 is not compatible with Xulrunner 1.9 as reported by <a href="https://bugs.eclipse.org/bugs/show_bug.cgi?id=262929">https://bugs.eclipse.org/bugs/show_bug.cgi?id=262929</a>. Xulrunner is typically installed as part of the Firefox browser and v1.9 is used by Firefox v3.5 and above. The compatible versions of Xulrunner are shown here: <a href="http://www.eclipse.org/swt/faq.php#browserlinux">http://www.eclipse.org/swt/faq.php#browserlinux</a>.</p> <p><b>Workaround:</b> Workaround 1: The preferred workaround is to obtain a compatible version of xulrunner. You can configure TIBCO Business Studio to use it by adding this to the end of the TIBCOBusinessStudio.ini file:</p> <pre data-bbox="414 1128 1299 1163">-Dorg.eclipse.swt.browser.XULRunnerPath=path_to_xulrunner_1_8</pre> <p>Workaround 2: If you are not able to use workaround 1, you can also create a shell script to start TIBCO Business Studio that will first set GRE_HOME to a non-existent path (e.g. /dev/nul) and then start TIBCO Business Studio. This will use a more basic browser than Firefox and will result in degraded behavior wherever the browser control is used including in welcome pages, help content and TIBCO Forms preview.</p>

Change Request ID	Summary/Workaround
XPD-230	<p><b>Summary:</b> On a business object model child diagram it is not possible to create a package element or a view to a package on the main diagram. This is expected behavior as we do not want to support packages on child diagrams. Consequently, packages do not appear in the child diagram wizard, or as a create tool on the palette and context menu of the child diagram. However, it appears that it is still possible to Copy/Paste packages onto the child diagram canvas and Project Explorer using <b>Edit &gt; Copy</b>, <b>Edit &gt; Paste</b> and <b>Ctrl-C</b>, <b>Ctrl-V</b>.</p> <p><b>Workaround:</b> None. It is discouraged behavior.</p>
XPD-475	<p><b>Summary:</b> The Business Object Modeler does not allow you to enter default values as very large numbers or in scientific notation for Fixed Length (BigInteger) and Fixed Point (BigDecimal) types. For example, the maximum value you can enter at design-time for a default value on a 32 bit Signed Integer is 2147483647. If you enter 2147483648 or greater then the designer reverts to the last stored default value.</p> <p><b>Workaround:</b> None.</p>
XPD-16	<p><b>Summary:</b> A number of problems exist with content assist for Business Object Models in TIBCO Business Studio. These include:</p> <ul style="list-style-type: none"><li data-bbox="347 869 1236 930">• Braces, {..}, are required in an If statement by the TIBCO Business Studio script editor, although they are only optional in JavaScript.</li><li data-bbox="347 951 1236 1043">• In the TIBCO Business Studio script editor, valueOf() does not appear in Content Assist and is not accepted by script validation, although it is the same as toString().</li><li data-bbox="347 1064 979 1091">• === operator is not supported by script validation</li></ul> <p><b>Workaround:</b> None.</p>
XPD-1	<p><b>Summary:</b> When there are multiple overview URLs present, which is allowed based on the uddi v3 schema, some of them may not be WSDL-type URLs.</p> <p><b>Workaround:</b> Only a URL using the "wsdlInterface" value is a WSDL URL that can be imported. If a urlType is text, TIBCO Business Studio should not try to import WSDL doc from such a URL.</p>

Change  
Request ID

## Summary/Workaround

MR 42856

**Summary:** When installing TIBCO Business Studio, the following error may occur. When it does it indicates that the InstallShield database has become corrupted:

**A Java Runtime Environment (JRE) or Java Development Kit (JDK) must be available in order to run Eclipse. No Java virtual machine was found after searching the following locations I:/StudioA3/tibcojre/14.6.0/bin.**

**Workaround:** If you receive this error, do the following:

1. Try installing TIBCO Business Studio in an empty directory.
2. If you still receive the error, you should delete the `_vpddb` folder in the `\Program Files\Common Files\Installshield\Universal\TIBCO\Gen1` directory.

**Warning:** If you delete the `_vpddb` folder, it means that you will not be able to use `_uninstall` to uninstall any TIBCO software. To uninstall TIBCO software you must delete the folder where the software is installed.

AMRP-404/  
MR 42851

**Summary:** When using an SMTP Shared Resource template to create an SMTP shared resource, there is nowhere to define the **From** address of the SMTP server. This means it is not possible to specify a global **From** address for the SMTP server for all emails sent from that server.

**Workaround:** Define the address of the SMTP Server for each E-Mail service task, individually. To do this:

1. In TIBCO Business Studio, select the E-Mail service task.
2. Click **E-Mail** in the **Properties** view.
3. Select **Use Custom Configuration**.
4. In the box beside **Use Custom Configuration**, type in the address.

Change  
Request ID

## Summary/Workaround

MR 42797

**Summary:** If you installed TIBCO Business Studio using the **Solution Designer** persona, you must reset the target platform before exporting or deploying projects to the TIBCO Silver BPM destination, otherwise you will receive the following error.



To reset the target platform, do the following:

1. In TIBCO Business Studio, select **Windows > Preferences**. The **Preferences** dialog is displayed.
2. Select **Plug-in Development > Target Platform**. The contents of the **Location** field are as follows:

***STUDIO\_HOME/eclipse\_platform/ganymede/eclipse/../../../../components/s  
hared/1.0.0***

where *STUDIO\_HOME* is the directory where you installed TIBCO Business Studio.

3. From the **Location** field, use the drop-down list to change the contents of the **Location** field to:

***STUDIO\_HOME/eclipse\_platform/ganymede/eclipse/***

where *STUDIO\_HOME* is the directory where you installed TIBCO Business Studio.

4. Click **Apply**, then **OK**.

MR 42796

**Summary:** When installing TIBCO Business Studio, you cannot use your own Eclipse installation as documented in the Installation Guide. This is due to an error in the installer.

**Workaround:** None.

Change Request ID	Summary/Workaround
MR 42787	<p><b>Summary:</b> When using a Web Service Service Task, you cannot map JavaScript to a WSDL that contains a single primitive element.</p> <p><b>Workaround:</b> None.</p>
MR 42605/MR 42376	<p><b>Summary:</b> A project for deployment in TIBCO ActiveMatrix BPM should not reference processes, Business Object Models or XPDL files from another project. This is because the version numbers of the processes, Business Object Models and XPDL files will be different from the project referencing them and TIBCO ActiveMatrix Workspace requires that the version numbers match.</p> <p><b>Workaround:</b> None.</p>
MR 42523	<p><b>Summary:</b> When trying to launch the TIBCO ActiveMatrix Administrator from TIBCO Business Studio, a <b>Session Timeout</b> error is displayed.</p> <p><b>Workaround:</b> Select <b>Window &gt; Preferences</b>, and type <b>Web Browser</b> in the filter field. Set the browser <b>either</b> to be external <b>or</b> to be Firefox.</p>
MR 41603	<p><b>Summary:</b> In versions before TIBCO Business Studio Version 3.3.0, WSDLs that were imported using the <b>Imported using URL</b> option were stored as the original URL that the WSDL was imported from. This meant that however you configured the Endpoint Resolution in the Service Task, the Service Task would use the original URL of the WSDL. This causes problems when deploying an application to TIBCO Silver BPM.</p> <p><b>Workaround:</b> When the project is imported into TIBCO Business Studio, a validation error reports that the WSDL location is incorrect. If you right-click on the validation error and select <b>Quick Fix</b>, the WSDL location is corrected.</p>
MR 39053	<p><b>Summary:</b> If TIBCO Business Studio has crashed or existed abnormally, and then been restarted, sometimes an error is displayed. This is due to a connection to an internal database that uses being lost. Click <b>OK</b> on the error dialogs repeatedly until the error dialog closes and you are returned to TIBCO Business Studio.</p> <p><b>Workaround:</b> None.</p>
MR 37947	<p><b>Summary:</b> Transforming XPDL processes into SVG graphical format is still experimental in this release of TIBCO Business Studio. Currently, associations and artefacts are not transformed.</p> <p><b>Workaround:</b> Select JPEG Export Format.</p>

Change Request ID	Summary/Workaround
1-9YTWOD	<p><b>Summary:</b> When running a simulation, the simulation perspective is not always properly reset. This sometimes results in symptoms such as the simulation controls being disabled, the simulation progress data on the Process Editor being either absent or incomplete, and the simulation results window being blank.</p> <p><b>Workaround:</b> Select <b>Window &gt; Reset Perspective</b>.</p>
1-9YIL89	<p><b>Summary:</b> <b>This relates to the Data Source Explorer:</b> Work done in offline mode seems to be lost on restarting TIBCO Business Studio.</p> <p>If the connection is in a disconnected state, when you select the <b>Browse for stored procedure</b> button on a Service Task, TIBCO Business Studio tries to connect to the database; it does not attempt to use any schema that may have been saved offline. If the network or remote server is not available this attempt to connect will fail.</p> <p><b>Workaround:</b> Use the <b>Save Offline</b> option whilst connected to the network. If you need to restart work when you are disconnected from the network, select <b>Work Offline</b> on the Data Source Explorer <i>before</i> clicking the <b>Browse</b> option on the Service Task.</p>
1-9XY23T	<p><b>Summary:</b> When long running background activities are taking place (for example, when the 'Building the Workspace' message is displayed) then in some cases process selection dialogs will present incorrect results.</p> <p><b>Workaround:</b> If you see a dialog not display the items you expect, wait for the build to complete and try again.</p>
1-9XXGB9	<p><b>Summary:</b> In TIBCO Business Studio version 3.2, a WSDL file that has been generated from XPD (for example, from a start message event) is marked as <b>Derived</b>. This did not apply in previous versions, and WSDL files migrated from previous versions of TIBCO Business Studio are not automatically marked as <b>Derived</b>. A derived file is always overwritten when there are changes to the XPD file from which it is derived.</p> <p><b>Workaround:</b> If you want to keep a migrated WSDL file synchronized with the XPD, you should manually set the <b>Derived</b> flag when migrating to release 3.2. You can do this by selecting <b>Properties</b> from the context menu of the WSDL file and selecting the <b>Derived</b> checkbox.</p>
1-9WP7VH	<p><b>Summary:</b> When WSDL is generated from XPD files, if the WSDL editor is open, changes to the WSDL file are not reflected.</p> <p><b>Workaround:</b> Reopen the WSDL editor.</p>

Change Request ID	Summary/Workaround
1-9EUIY1	<p><b>Summary:</b> You cannot use the command line to generate process package documentation if there are <i>any</i> workspaces open. The expected behavior is that you cannot generate process package documentation if the workspace that contains the package is open.</p> <p><b>Workaround:</b> Close all workspaces before generating process package documentation from the command line.</p>
1-9EUIYV	<p><b>Summary:</b> If you have installed TIBCO® French Language Pack (Eclipse Platform) before installing TIBCO Business Studio, the language pack is not detected.</p> <p><b>Workaround:</b> You must link the language pack plug-ins with the TIBCO Business Studio installation as described in <i>TIBCO Business Studio Installation</i> (post-installation tasks).</p>
1-9DABLW	<p><b>Summary:</b> In the Import Wizard Information dialog there is a XSLT selection browser that allows you to select an XSLT file. This dialog does not list any <b>.xslt</b> files on Linux.</p> <p><b>Workaround:</b> Either manually enter the path to the XSLT file or rename the file extension to <b>.xsl</b>.</p>

Change Request ID	Summary/Workaround
1-9DCCY6	<p data-bbox="347 227 1246 348"><b>Summary:</b> When working with multiple TIBCO Business Studio implementations, the SVN <b>Team &gt; Replace With &gt; Latest from Repository</b> command behaves differently depending on whether any local changes have been made.</p> <p data-bbox="347 371 1258 560">For example, suppose one TIBCO Business Studio user saves a package to the repository, creating revision 57. Another user checks out revision 57. In the mean time, the user who created revision 57 makes more changes and creates revision 58. The user who checked out revision 57 has a working copy that is now out of synch with the repository. If they enter the <b>Team &gt; Replace With &gt; Latest from Repository</b> command, the following will happen:</p> <ul data-bbox="347 583 1258 817" style="list-style-type: none"><li>• If the user whose working copy is out of synch has made local changes, a pop-up dialog is displayed warning that local changes will be lost. If the user clicks <b>OK</b>, the latest revision from the repository replaces the current working copy and the user is in synch with the repository.</li><li>• If the user whose working copy is out of synch has <i>not</i> made local changes, no dialog is displayed, but the working copy is not overwritten with the latest revision from the repository.</li></ul> <p data-bbox="347 840 1246 961"><b>Workaround:</b> If you are sure that you have not made any local changes, use the <b>Team &gt; Update</b> option. If you use this method there is no warning about overwriting your working copy, so be sure that you have not made any local changes that you want to preserve.</p>
1-8ZPEGX	<p data-bbox="347 994 1222 1086"><b>Summary:</b> When a Package file is copied and pasted, duplicate IDs are created and a problem is displayed in the Problems view. This problem prevents deployment until a quick fix is applied to the correct the problem.</p> <p data-bbox="347 1109 1258 1263">However, if the original Process was deployed before the Package file was copied and pasted, the Packages with duplicate ID errors have their Modules listed as deployable modules in the <b>Select Modules</b> dialog of the Deployment wizard even though the quick fix has not yet been applied to the correct the duplicate ID problem.</p> <p data-bbox="347 1286 1258 1341"><b>Workaround:</b> Perform a clean on the Project by selecting the <b>Project &gt; Clean</b> menu option.</p>
1-8ZJMK3	<p data-bbox="347 1374 1258 1466"><b>Summary:</b> TIBCO Business Studio cannot validate the data type of literals in user defined scripts. This means that if you specify an invalid data type you are not warned.</p> <p data-bbox="347 1489 1125 1513"><b>Workaround:</b> Make sure you use the correct data type for literals.</p>

Change Request ID	Summary/Workaround
1-8ZJM43	<p><b>Summary:</b> Sometimes, content assist does not display the up to date contents in the XPATH Script Editor.</p> <p><b>Workaround:</b> If you change the focus to another view, then return to the mapper, the correct contents will be displayed. In some cases, you may need to restart TIBCO Business Studio.</p>
1-8ZJM4S	<p><b>Summary:</b> There are some tasks for example, Receive, Send task and Intermediate Message events where TIBCO Business Studio does not flag data type mismatch errors for mappings.</p> <p><b>Workaround:</b> None.</p>
1-8ZJMKX	<p><b>Summary:</b> When TIBCO Business Studio is installed for the Business Analyst persona, the implementation details section for the Service Task is visible but you cannot enter any implementation details for the Service Task.</p> <p><b>Workaround:</b> None.</p>
1-8ZHBB8	<p><b>Summary:</b> When creating a new process from a diagram fragment, the Destination Environment is not reflected in the new process.</p> <p><b>Workaround:</b> You have to re-specify the Destination Environment in the new process.</p>
1-8ZHBEV	<p><b>Summary:</b> The following error is displayed if you create a process in an older version of TIBCO Business Studio and then close the older version of TIBCO Business Studio while the Editor is still open. If you then try and open TIBCO Business Studio Version 3.0 using the workspace from the older version of TIBCO Business Studio, you get the following error.</p> <p>Error opening the editor. Reason: The process for this editor no long exists: New process open but not saved on last exit?</p> <p><b>Workaround:</b> Close the Editor before exiting the older version of TIBCO Business Studio.</p>
1-8ZJM7G	<p><b>Summary:</b> When you migrate a Concept Model from an earlier version of TIBCO Business Studio to this version of TIBCO Business Studio, the domain values alias are not migrated, although the domain values are.</p> <p><b>Workaround:</b> You must redefine the domain values alias for the Concept Model.</p>

Change Request ID	Summary/Workaround
1-8ZHB35	<p><b>Summary:</b> A Business Object Model file cannot be reopened if its applied UML profile has been deleted, moved or modified.</p> <p><b>Workaround:</b> None.</p>
1-8ZJMAD	<p><b>Summary:</b> If you have installed Asset Central, when uninstalling TIBCO Business Studio 3.0, uninstall sometimes hangs when uninstalling Asset Central.</p> <p><b>Workaround:</b> If <b>uninstall</b> has reached the <b>TIBCO Business Studio Asset Central</b> dialog and appears to have hung, close the dialog. <b>Uninstall</b> then completes. You must then manually remove the Asset Central service. To do this:</p> <ol style="list-style-type: none"><li>1. Open a command prompt.</li><li>2. Navigate to the directory that contains your Asset Central binary files. For example <i>installation_environment\studio\3.0\assetcentral\bin</i> where <i>installation_environment</i> is the location where you installed TIBCO Business Studio Version 3.0.</li><li>3. Run the following command: <pre>Apache.exe -k uninstall -n "AssetCentralService"</pre>where <i>AssetCentralService</i> is the name of your TIBCO Business Studio Asset Central Service.  The TIBCO Business Studio Asset Central Service should be successfully removed.</li></ol>
1-8ZHB6Y	<p><b>Summary:</b> If you use <b>Import</b> to import a simulation historical case, and the XLS has the <b>Autofilter</b> option set, the import fails. See <a href="http://saloon.javaranch.com/cgi-bin/ubb/ultimatebb.cgi?ubb=get_topic&amp;f=1&amp;t=020238">http://saloon.javaranch.com/cgi-bin/ubb/ultimatebb.cgi?ubb=get_topic&amp;f=1&amp;t=020238</a> for more information.</p> <p><b>Workaround:</b> Deselect the <b>Autofilter</b> option.</p>
1-8ZHAXX	<p><b>Summary:</b> If you update your process interfaces while your WSDL editor is open, the parameters for the web service operations are displayed as <b>Undefined type</b> in your WSDL file.</p> <p><b>Workaround:</b> Close and reopen your WSDL editor to see the updates.</p>

Change Request ID	Summary/Workaround
1-8ZJMAS	<p><b>Summary:</b> On Linux, if you select <b>About TIBCO Business Studio &gt; Plug-in Details</b>, you will get an error similiar to the one below:</p> <p>The signature cannot be verified for this signer META-INF/ECLIPSE.RSA in this bundle:  /home/linuxuser/ravi/studio/3.0/eclipse/plugins/org.eclipse.platform_3.3.3.r33x_r20080129</p> <p><b>Workaround:</b> You may safely ignore this error.</p>
1-8ZHB7F	<p><b>Summary:</b> If you are installing TIBCO Business Studio on Linux, you may receive the following warnings:</p> <pre>libxcb: WARNING! Program tries to unlock a connection without having acquired a lock first, which indicates a programming error. There will be no further warnings about this issue.</pre> <pre>libxcb: WARNING! Program tries to lock an already locked connection, which indicates a programming error. There will be no further warnings about this issue.</pre> <p><b>Workaround:</b> You can safely ignore these warnings.</p>
1-8ZHB8T	<p><b>Summary:</b> CTRL + Z (Undo) does not work from the Process Interface Properties View, if the Properties View is the only view that has focus.</p> <p><b>Workaround:</b> Make sure that the Project Explorer or Editor also has focus before changing a property on the Process Interface Properties View.</p>
1-720AU7	<p><b>Summary:</b> TIBCO Business Studio allows you to move a Lane between Pools even when there are Sequence Flows from objects contained within the Lane. This results in Sequence Flows crossing Pool boundaries which is not allowed in BPMN. TIBCO Business Studio should prevent the move in the same way that it prevents individual objects with outgoing sequence flow from being moved between Pools.</p> <p><b>Workaround:</b> None.</p>
1-720B16	<p><b>Summary:</b> Online context help is not available for Properties views.</p> <p><b>Workaround:</b> Perform a search for the required topic.</p>
1-721WJ3	<p><b>Summary:</b> In the TIBCO Business Studio user interface, there are menu items, wizards and so on that should be removed from the product, but cannot be due to technical issues with Eclipse.</p> <p><b>Workaround:</b> None.</p>

Change Request ID	Summary/Workaround
1-721QB4	<p><b>Summary:</b> The Problems view has a filter which may be set to the <b>selected element</b> or <b>selected element and its children</b>. The selected element must be a file; if a sub-file artifact is highlighted in the Project Explorer, a misleading set of defects may be displayed and the list will only be refreshed when a file-level artifact is selected. For example, if a Process is selected in the Project Explorer, and then a change made that would trigger a Problem whilst the above filters are selected, the Problem will only be displayed when the XPDL file that contains the Process is selected in the Project Explorer.</p> <p><b>Workaround:</b> None.</p>
1-721QDT	<p><b>Summary:</b> It is possible to edit the weighting of a simulation parameter while the simulation is running, however this has no effect on the currently running simulation. Any changes made are applied to the next simulation run.</p> <p><b>Workaround:</b> None.</p>
1-721QE8	<p><b>Summary:</b> In the Properties view for a Process, on the <b>Simulation</b> tab, Sequence Flows from a Gateway that have been deleted are still displayed and assigned a <b>Weighting</b> for simulation purposes.</p> <p><b>Workaround:</b> Click the Remove button to delete the extraneous Sequence Flow.</p>
1-721QIQ	<p><b>Summary:</b> Settings made from the Windows <b>Print</b> dialog (for example, Landscape or Portrait) take effect for the current print job, but are not preserved after exiting the <b>Print</b> dialog. This occurs whether you access the <b>Print</b> dialog by selecting <b>File &gt; Print</b> or by selecting <b>File &gt; Diagram Print Setup</b> and clicking the <b>Properties</b> button.</p> <p><b>Workaround:</b> None. This is a known Eclipse problem.</p>

## Change Request ID

## Summary/Workaround

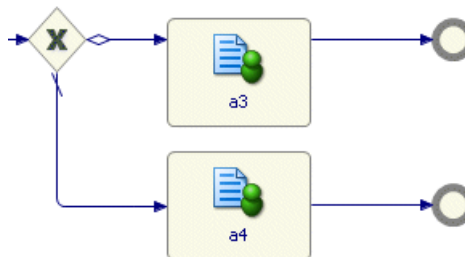
1-721QJZ

**Summary:** Any Process object that causes the simulation flow to branch and not re-join can potentially cause invalid simulations caused by multiple End Events. The simulation stops at the first End Event that it encounters, resulting in an incomplete (invalid) simulation. Examples of Project objects that can cause this are:

- Conditions that are not fired. For example:



- Sequence flows that branch and do not join re-join the main flow. For example:



**Workaround:** None. Avoid creating this situation in your Process.

1-721QND

**Summary:** In the Process Editor, when the view of a single-Lane Process is zoomed out and an object is added to the surrounding empty space, it should accommodate the object within the Lane. However, the boundary of the Lane disappears until you select another object on the Process.

**Workaround:** None.

1-721WSR

**Summary:** Pausing then re-starting a running simulation sometimes generates an exception in the log.

**Workaround:** None. The simulation runs normally apart from the exception.

Change Request ID	Summary/Workaround
1-721WTR	<p><b>Summary:</b> Under certain circumstances, simulations can generate an <code>OutOfMemoryException</code>. A large number of queued cases in the current simulation can cause this problem. The factors that influence the number of queued cases are:</p> <ul style="list-style-type: none"> <li>• the frequency and number of case starts</li> <li>• Activity duration</li> <li>• the number of Activities</li> </ul> <p><b>Workaround:</b> Avoid creating a situation where there is a large number of queued cases.</p>
1-721WUH	<p><b>Summary:</b> As part of the pre-processing for simulation, the Process is changed even though it is invalid. Ideally all changes made by the pre-processor should be reported as problems in the Problems view and corrected by the user.</p> <p><b>Workaround:</b> None.</p>
1-721WWK	<p><b>Summary:</b> On Windows 2000, if there is no printer attached to the machine, a null pointer exception is generated when selecting <b>File &gt; Diagram Print Setup</b>.</p> <p><b>Workaround:</b> Make sure a printer is connected before accessing the <b>Print Setup</b> dialog.</p>
1-75NQZ7	<p><b>Summary:</b> There may be duplicate bookmarks in the PDF output of a simulation comparison report.</p> <p><b>Workaround:</b> None; this is due to the way the 3rd party reporting tool generates bookmarks.</p>
1-7NB2L	<p><b>Summary:</b> Under certain circumstances during Simulation, the <b>Simulation time</b> display stops displaying some of the time information (such as the minutes or seconds).</p> <p><b>Workaround:</b> None.</p>
1-86O77Q	<p><b>Summary:</b> Processes that you intend to simulate must contain only alphanumeric characters or spaces in their names.</p> <p><b>Workaround:</b> None.</p>

Change Request ID	Summary/Workaround
1-86O7CU	<p><b>Summary:</b> On Windows 2003, if you select part of a Process, select <b>Copy as Image</b>, then paste the image into another application, the colors of the pasted image do not display properly. Additionally, in TIBCO Business Studio some of the buttons, wizards, and so on display with a black background.</p> <p><b>Workaround:</b> None.</p>
1-86O7DB	<p><b>Summary:</b> In the Project Explorer, under <b>Deployment Servers</b>, if you undeploy the Processes from the Package that contains them, the Package becomes empty. However, you cannot delete the empty Package.</p> <p><b>Workaround:</b> None.</p>
1-86RCSH	<p><b>Summary:</b> If you run a simulation successfully then attempt to use the <b>Run</b> configuration window (select the <b>Run &gt; Run...</b> menu option) to redefine the existing launch configuration to call another Package that contains a Process with the same name, the dialog accepts your configuration changes as valid. However, internally the id of the old Process is retained which causes the simulation to fail to run (an error message is displayed that the Process does not exist in the Package).</p> <p><b>Workaround:</b> Launch simulation from context menu in the Project Explorer. Alternately you can force the configuration dialog to update by browsing to a differently named Process (this will force the launch configuration to be updated). Then browse again to the Process that has the same name as the original but is located in a different Package.</p>
1-8GJ19N	<p><b>Summary:</b> When the mapper is first displayed for an Activity, any items that are already mapped should be automatically expanded so that the item is visible. Items that are not mapped should remain collapsed.</p> <p><b>Workaround:</b> None.</p>
1-86SUPT	<p><b>Summary:</b> The tooltip text for the button to change between the Process Analyst and Process Developer capabilities is not displayed after initially clicking the button.</p> <p><b>Workaround:</b> None.</p>
1-86RCS2	<p><b>Summary:</b> An event-based XOR Gateway generates an attribute for simulation even though it should not be capable of being simulated.</p> <p><b>Workaround:</b> Assign a name to the element.</p>

Change Request ID	Summary/Workaround
1-86O7IB	<p><b>Summary:</b> Within the Business Intelligence Reporting Tool (BIRT), when laying out a report, there is a tool that allows you to insert an image that is located elsewhere by specifying a URL. Using this method generates the error message:</p> <pre>Image (id = 66): + There are errors evaluating script "http://mysite.com/images/companylogo.jpg".</pre> <p><b>Workaround:</b> Embed the image in the report.</p>
1-86O7IS	<p><b>Summary:</b> Within the BIRT, if you copy a Data Set, the Alias and Display Names from the original Data Set are not copied.</p> <p><b>Workaround:</b> Manually recreate the Aliases and Display Names on the copied Data Set.</p>
1-86O7JT	<p><b>Summary:</b> Validation of JavaScript entered in TIBCO Business Studio occurs in two phases:</p> <ul style="list-style-type: none"> <li>• The script is validated for correct syntax.</li> <li>• If syntactically correct, the script is validated against the selected Destination Environment.</li> </ul> <p>This leads to the situation where you enter script that is not valid for a Destination Environment, but you are not informed of this until you have finished entering the script and it passes the first phase of validation (syntax checking).</p> <p><b>Workaround:</b> None.</p>
1-86RAKP	<p><b>Summary:</b> The <b>Edit &gt; Undo</b> and <b>Edit &gt; Redo</b> menu options for scripts do not work as expected.</p> <p><b>Workaround:</b> Press <b>Ctrl + Z</b> and <b>Ctrl + Y</b> to undo and redo respectively.</p>
1-86O7LI	<p><b>Summary:</b> The buttons OK and Cancel are not necessary on the <b>Properties</b> dialog for products because the information on this dialog cannot be changed. To view the properties, select <b>Help &gt; Software Updates &gt; Manage Configuration</b>, right-click a product from the left hand pane, and select <b>Properties</b>.</p> <p><b>Workaround:</b> None.</p>

Change Request ID	Summary/Workaround
1-86O7NV	<p><b>Summary:</b> When entering JavaScript it is not supported to pass a Boolean Data Field to a function that expects a Boolean expression.</p> <p><b>Workaround:</b> None.</p>
1-8GJ1A3	<p><b>Summary:</b> In areas where you can enter JavaScript, content assist should not appear after single line comment or within multi-line comments, however it does appear.</p> <p><b>Workaround:</b> None.</p>
1-86RAL6	<p><b>Summary:</b> Subversion generates an error if in the SVN Repository Exploring perspective, you right-click a project in your local repository, select <b>Import</b>, and then attempt to import a project that is in your workspace, but not under Subversion control.</p> <p><b>Workaround:</b> Source control your Projects using the <b>Team</b> context menu in the Project Explorer. For more information, see the <i>TIBCO Business Studio Modeling User's Guide</i>.</p>
1-86RALN	<p><b>Summary:</b> In the History view for SVN, you can right-click an item and select <b>Set Commit Properties</b>. The resulting dialog allows you to retroactively enter comments for the selected revision. To exit the dialog you must specify an <b>Author</b>, however if you have not set up the SVN repository to use authentication, the Author that you specify is not then listed in the Author column in the History view. Note, however that retroactively entering comments for revisions is not recommended practice.</p> <p><b>Workaround:</b> None.</p>
1-86O7MG	<p><b>Summary:</b> In the SVN Repository Exploring perspective, in the SVN Repository view, right-clicking and selecting <b>Properties</b> displays properties at the highest (repository) level, but not at lower levels (for example, the Project level).</p> <p><b>Workaround:</b> None.</p>
1-86O7MX	<p><b>Summary:</b> After selecting <b>Team &gt; Commit</b> and saving changes to SVN, you must press <b>F5</b> to see those changes reflected in the History tab.</p> <p><b>Workaround:</b> None.</p>

Change Request ID	Summary/Workaround
1-86RANT	<p><b>Summary:</b> In a Process with <b>Simulation</b> set as the Destination Environment, when you right-click the Process and select <b>Prepare Simulation</b>, the necessary Parameters are created for simulation. Despite deleting the values for the created Parameters and deleting the Parameters from the Project Explorer, they are still displayed in the Properties view for the Process.</p> <p><b>Workaround:</b> None.</p>
1-86O7QP	<p><b>Summary:</b> Reserved words for JavaScript (for example, "return") when used in a WSDL cannot be mapped in a Service Task.</p> <p><b>Workaround:</b> Avoid using words that have special meaning in programming languages as variables.</p>
1-86O7R6	<p><b>Summary:</b> In the Concept Modeler, copying and pasting on the editor does not work correctly.</p> <p><b>Workaround:</b> Copy and paste Concept Model objects using the Project Explorer.</p>
1-86PV6J	<p><b>Summary:</b> TIBCO Silver BPM allows the mapping of repeating elements to Arrays. A WSDL that does this cannot be mapped in the same way in TIBCO Business Studio. In TIBCO Business Studio, you cannot map simple types to simple types that are within an array of complex types.</p> <p><b>Workaround:</b> None.</p>
1-86PVAV	<p><b>Summary:</b> When moving a Group between Lanes it often moves to the top of the uppermost Lane, regardless of where you position it. Also, when deleting a Group, the Process Editor does not refresh correctly and the Process Editor must be closed and then opened to reflect the change to the Process.</p> <p><b>Workaround:</b> None.</p>
1-8GL8RP	<p><b>Summary:</b> On Linux, when connecting remotely and using the Process Editor, black areas are sporadically added to the diagram when adding new elements, using context menus, moving objects, and so on.</p> <p><b>Workaround:</b> None.</p>
1-8GL8SP	<p><b>Summary:</b> On Linux, printing is not enabled in TIBCO Business Studio because it is not supported by the version of Eclipse bundled with TIBCO Business Studio.</p> <p><b>Workaround:</b> None.</p>

Change Request ID	Summary/Workaround
1-8GL8TO	<p><b>Summary:</b> In SUSE 10, objects in the Process Editor and Concept Modeler have dark backgrounds for images (for example, on Activities and Concepts).</p> <p><b>Workaround:</b> None.</p>
1-8GL8U5	<p><b>Summary:</b> On Linux, when using Wizards (for example to rename a Process), pressing Enter rather than clicking the Finish button does not work correctly.</p> <p><b>Workaround:</b> Click the <b>Finish</b> button, or press Tab before pressing Enter.</p>
1-8GL9UM	<p><b>Summary:</b> In the Concept Modeler, when using the Zoom options, the graphic display of the Palette sometimes becomes slightly degraded.</p> <p><b>Workaround:</b> None.</p>
1-8GL8WB	<p><b>Summary:</b> There can be a noticeable performance degradation when manipulating large amounts of data (for example, running simulation or deleting multiple Activities from a Process with more than 200 Activities).</p> <p><b>Workaround:</b> If the you suspect that the performance degradation is due to the validation of the Project, turn off in-memory validation by de-selecting Project &gt; Build Automatically. When you want to package your project, select either Project &gt; Build All or Project &gt; Build Project.</p>
1-8GL8WS	<p><b>Summary:</b> The TIBCO Business Studio Welcome Page cause problems on some Linux 64-bit installations.</p> <p><b>Workaround:</b> Use workspace created on the different machine (in order to skip the Welcome page on startup).</p>
1-8GL8X9	<p><b>Summary:</b> When undoing the deletion of a Concept in the Concept Modeler, the position and appearance of the Concept is not restored.</p> <p><b>Workaround:</b> None.</p>
1-8GL8XQ	<p><b>Summary:</b> The Asset Central Configuration dialog will not be displayed if your PATH environment variable is not configured to point to a version 1.5 or later JRE.</p> <p><b>Workaround:</b> For information about how to configure your PATH environment variable, see <i>TIBCO Business Studio Installation Guide</i>.</p>

Change Request ID	Summary/Workaround
1-8GL8Y7	<p><b>Summary:</b> Copying a special folder (for example, a Services folder) and pasting it into another BPMN project does not retain the special folder setting of the copied folder. You must redesignate the folder as a special folder after the copy.</p> <p><b>Workaround:</b> None.</p>
1-8GL8ZM	<p><b>Summary:</b> If TIBCO Business Studio is left idle for more than approximately 30 minutes, process mappings can disappear.</p> <p><b>Workaround:</b> To restore the mappings, restart TIBCO Business Studio.</p>
1-8GL92G	<p><b>Summary:</b> When a Java Service Task in TIBCO Business Studio maps a response value using a specific array index value, and that index does not exist at runtime, an error occurs. For example, mapping RV[4] when only elements 0 to 3 exist causes an error.</p> <p><b>Workaround:</b> None.</p>
1-8GL91I	<p><b>Summary:</b> When a project is shared with SVN, if you close TIBCO Business Studio with a file that has unsaved changes, you are prompted to save the changes. Upon restarting TIBCO Business Studio, the SVN project is marked to indicate that a commit is pending, however the Console view for project sharing is blank.</p> <p><b>Workaround:</b> Set the Console view back to <b>SVN Console</b>.</p>
1-8GRL9E	<p><b>Summary:</b> In the <code>SWDIR\ejajava\pojo.properties</code> configuration file, foreign characters not in the default character set can be expressed using UNICODE escape sequences. For example, the following equates to a EURO symbol (€):</p> <pre>OUTPUT.TEXT = \u20ac</pre> <p><b>Workaround:</b> None.</p>
1-8GRLA5	<p><b>Summary:</b> The deployment extension point interface has changed since Version 2.0. The interface <code>com.tibco.xpd.deploy.model.extension.Connection</code> has a new method, <code>validateModule()</code> that needs to be implemented in TIBCO Business Studio Version 2.1. Deployment extensions developed against TIBCO Business Studio Version 2.0 must be recompiled against TIBCO Business Studio Version 2.1. The new method has to be implemented, but it can return true to retain the existing behavior.</p> <p><b>Workaround:</b> None.</p>